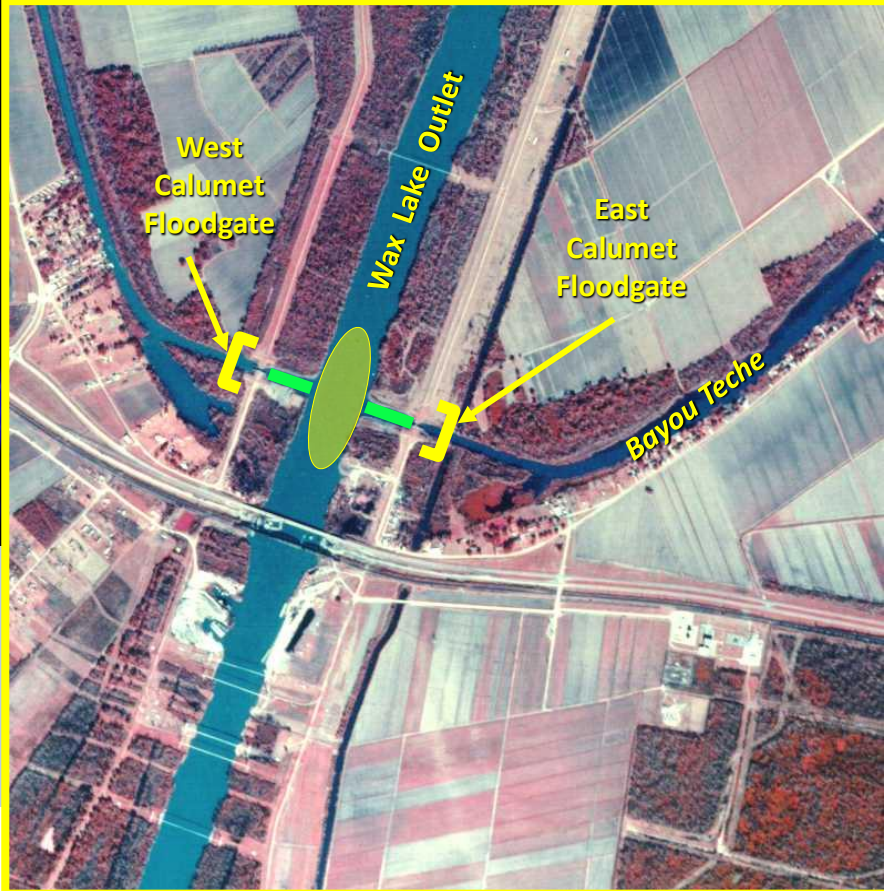


# BAYOU TECHE EAST & WEST CALUMET



Open Water  
Disposal Areas



Dredging Reach

## FY 2022 MAINTENANCE DREDGING

PROJECT: Bayou Teche

REACH: East & West Calumet Floodgates

OPERATIONS MANAGER: Tracy Falk

PHONE: (504) 862-2971

LOCAL SPONSOR: St. Mary Parish

COASTAL ZONE MANAGEMENT: C20210131

## DESCRIPTION OF WORK:

Maintain -8' Mean Low Gulf (MLG) depth with an 80 foot width; transitions to -9' MLG with 256 foot width .

## HISTORICAL DREDGING FREQUENCY:

As Needed

LAST DREDGED: 2015

TYPE OF DREDGE: Cutterhead, Bucket Dredge, WID

ESTIMATED QUANTITY: 50,000 CY

ESTIMATED COST: \$1.2 million

ADVERTISE: TBD

OPEN BIDS: TBD

AWARD: TBD

START WORK: TBD

DURATION: 2 months

DREDGING REACH: East & West Calumet Floodgates

DISPOSAL AREA: Beyond the -35 foot contour

DISPOSAL TYPE: Open Water

REMARKS:

Fiscal Year	Contract No.	Disposal Area	Dredging Quantity (CY)
1996	96C0013	OW	15,644
1998	98C0010	OW	19,981
2000	00C0041	CDF	10,200
		OW	10,350
2002	02C0031	OW	25,295
2007	06C0211	OW	19,630
2010	09C0128	OW	24,406
2012	11C0067	OW	14,991
2015	14C0050	OW	20,005